



SNRU Sustainable Development Initiative

Clean water and sanitation

6 CLEAN WATER
AND SANITATION



Suwannarong P.

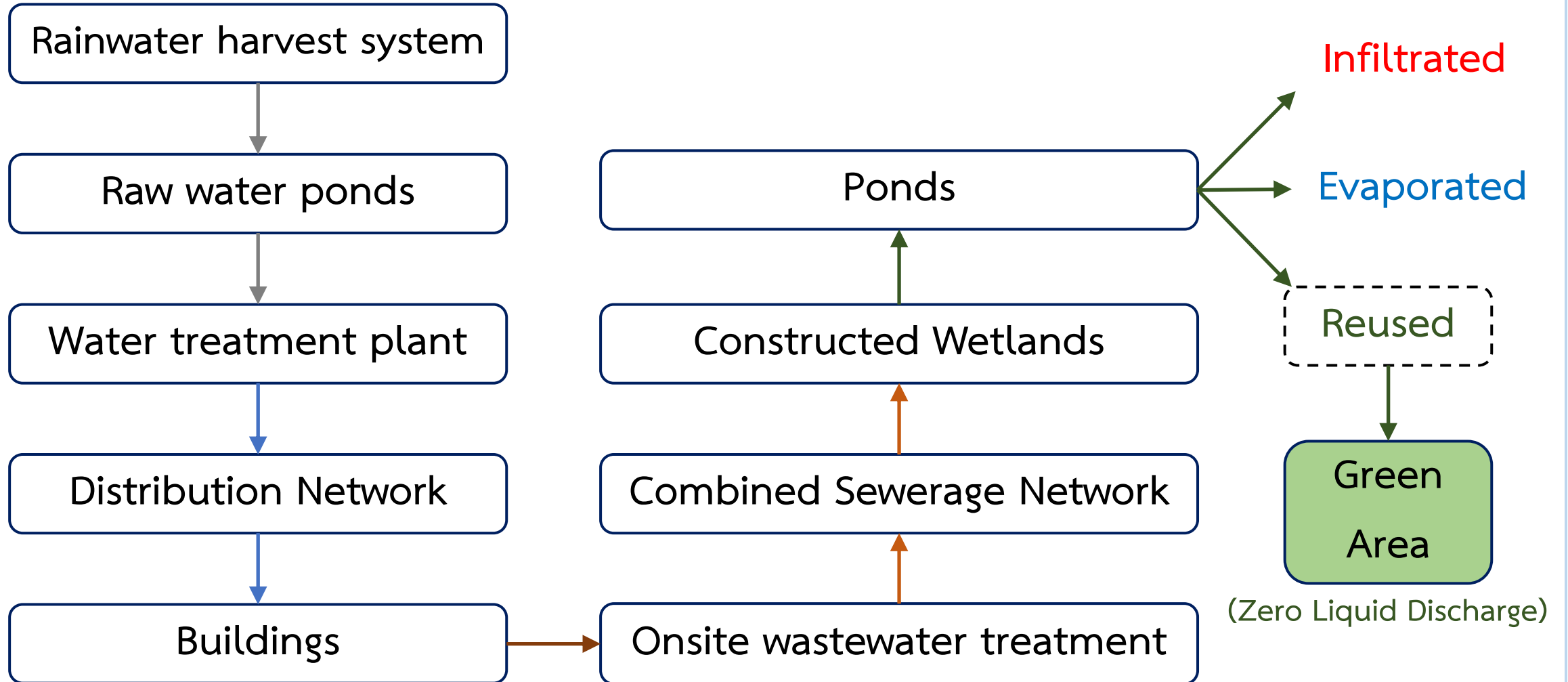
Zero Influent and Zero Liquid Discharge

- All academic buildings use university water supply taps.
(The raw water used in SNRU is rainwater)
- All buildings have onsite wastewater treatment.
- All treated water can be reused, infiltrated, or evaporated to the atmosphere.

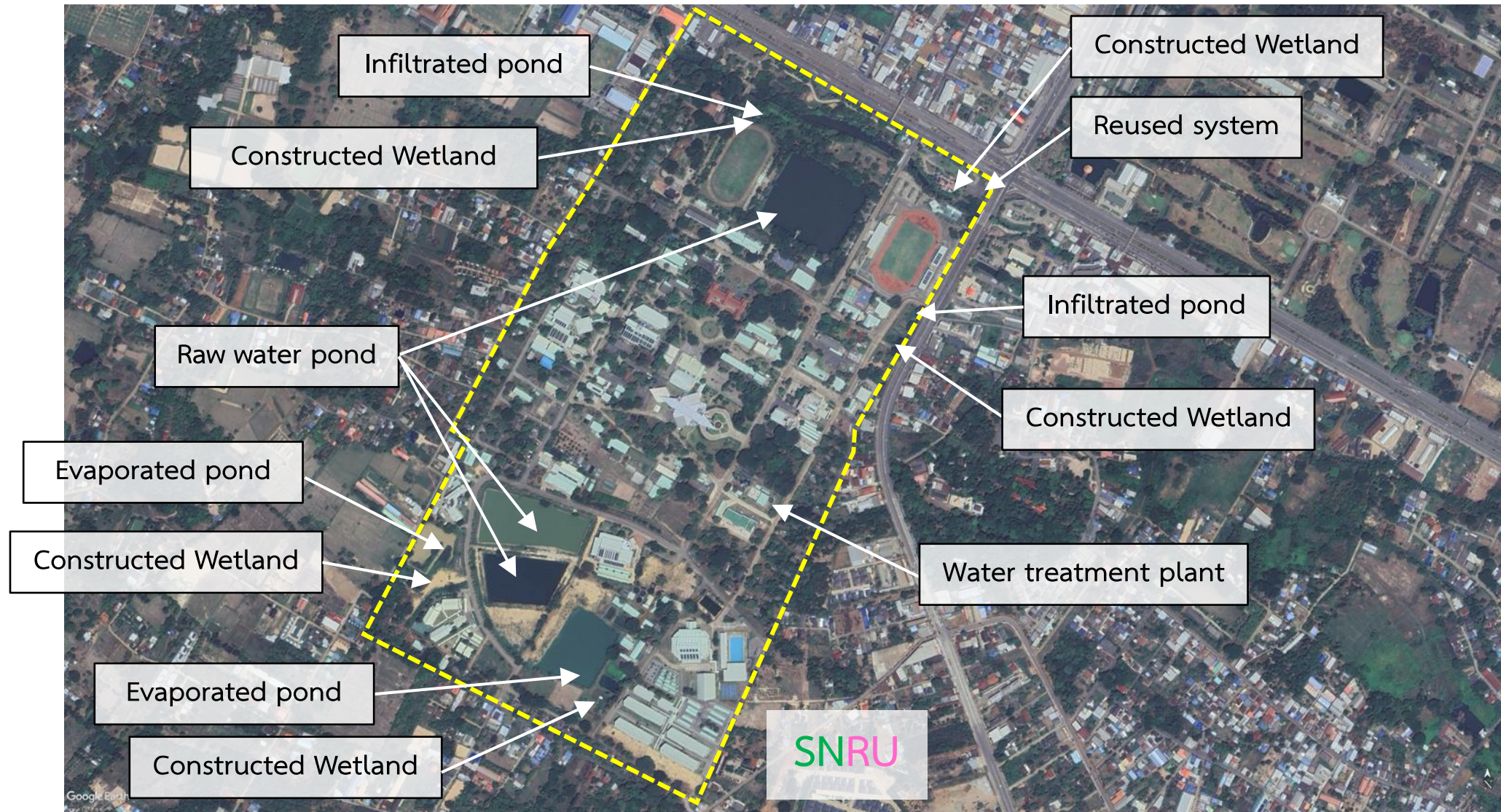
SNRU's Water Management System



(Zero Influent)



SNRU's Water Management System (Cont.)



SNRU's Raw water ponds



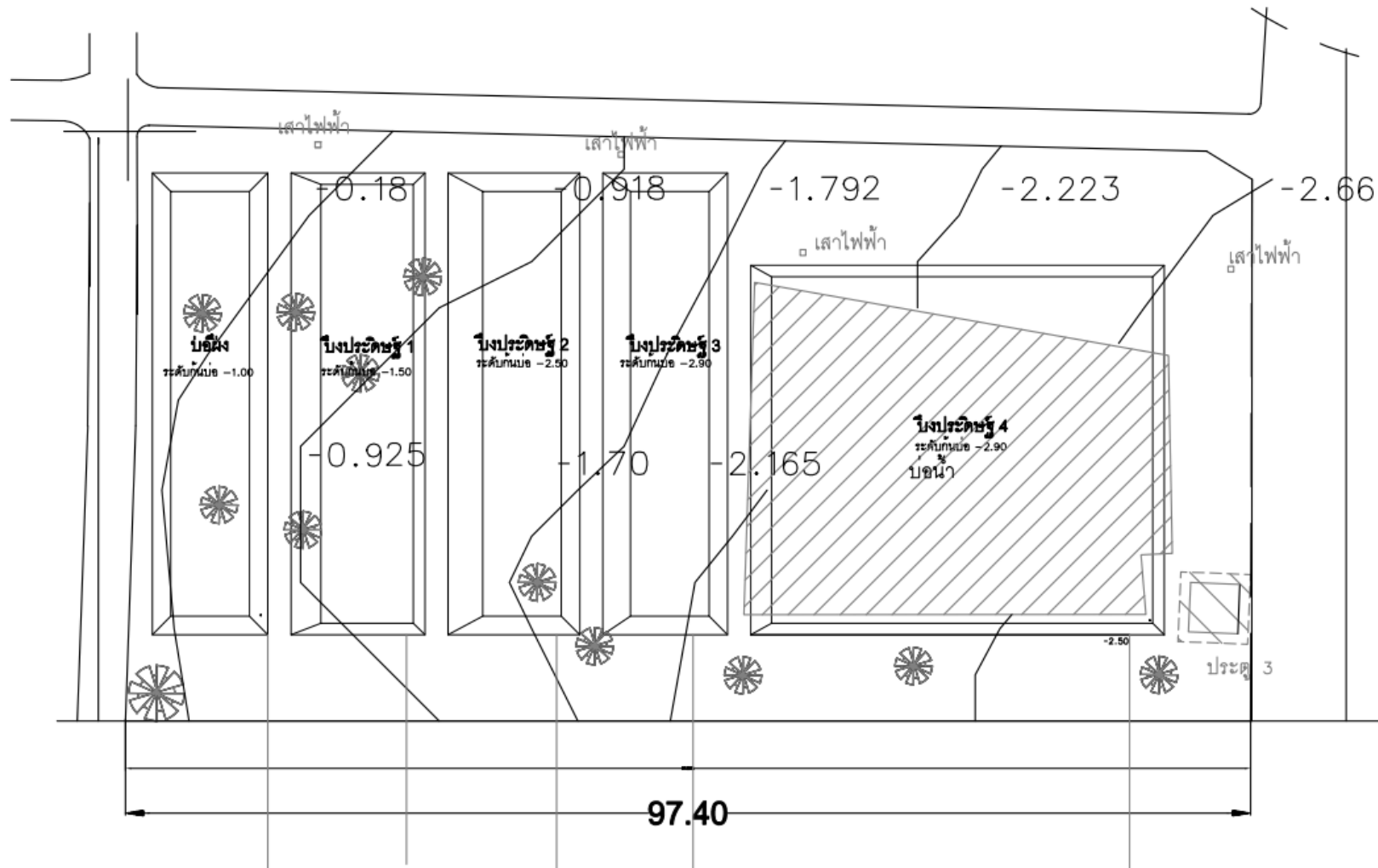
SNRU's Raw water ponds (Cont.)



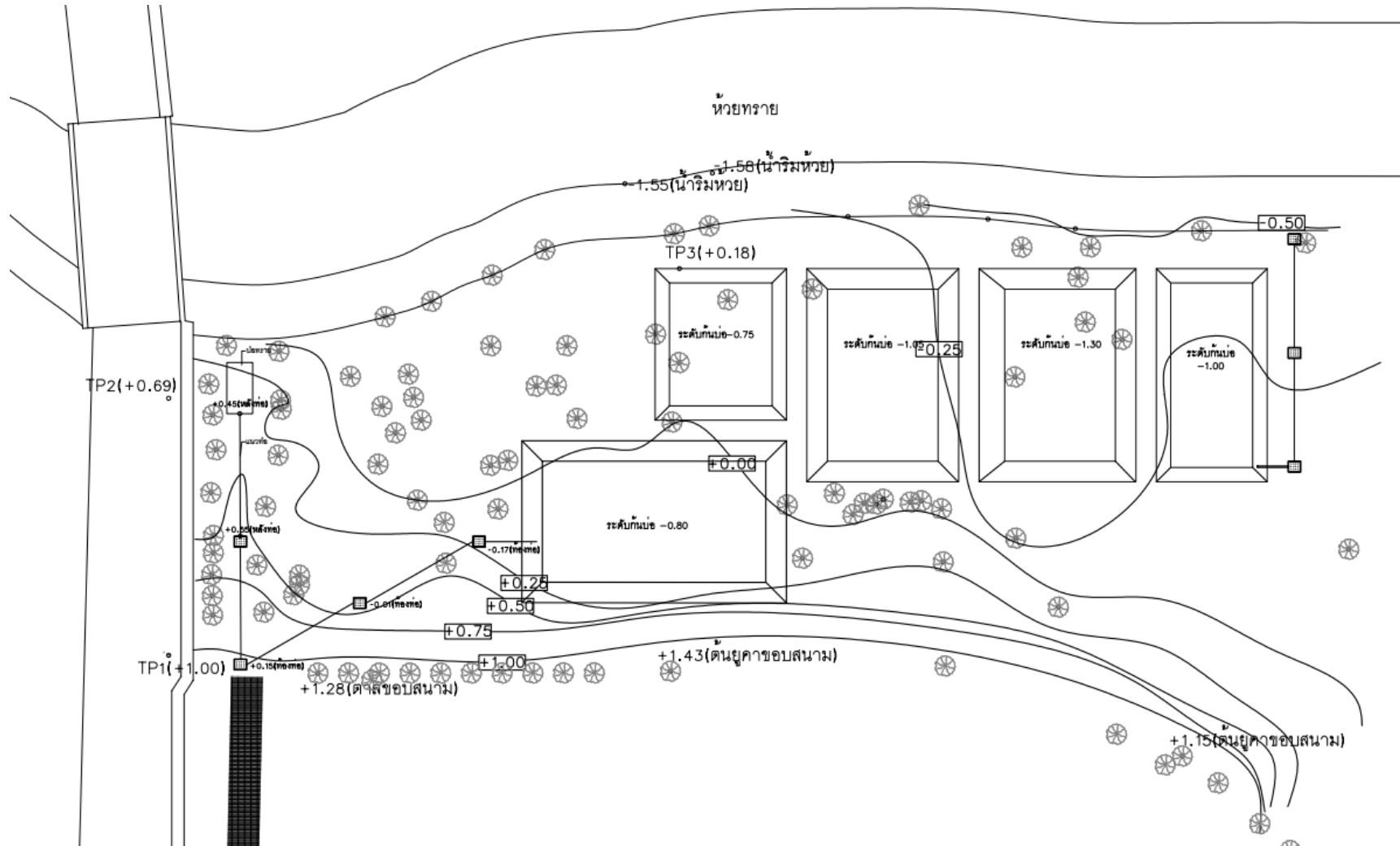
SNRU's Water treatment plant



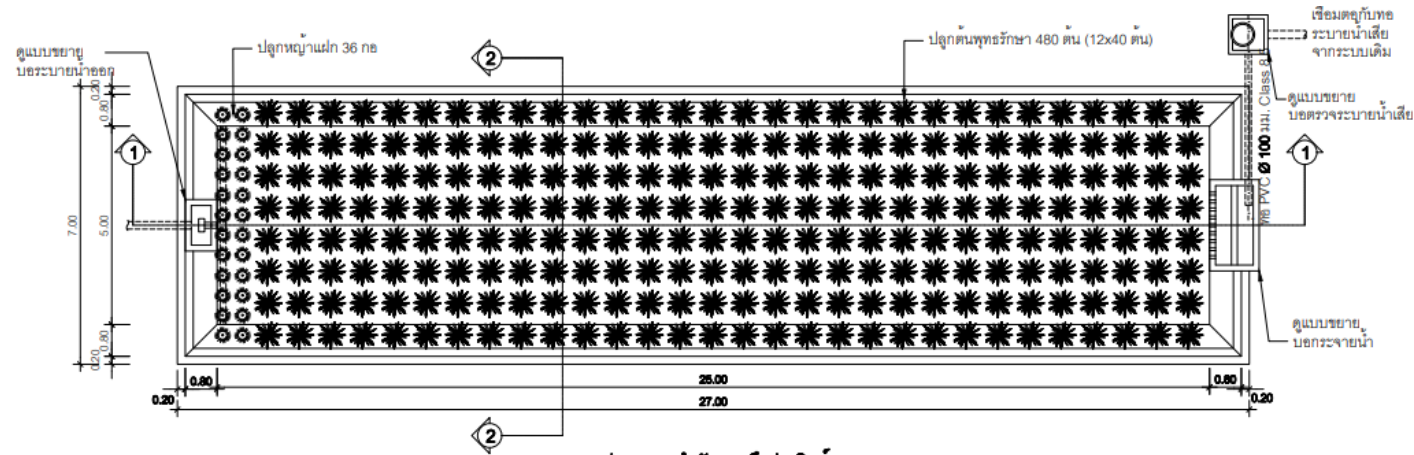
SNRU's Constructed Wetland



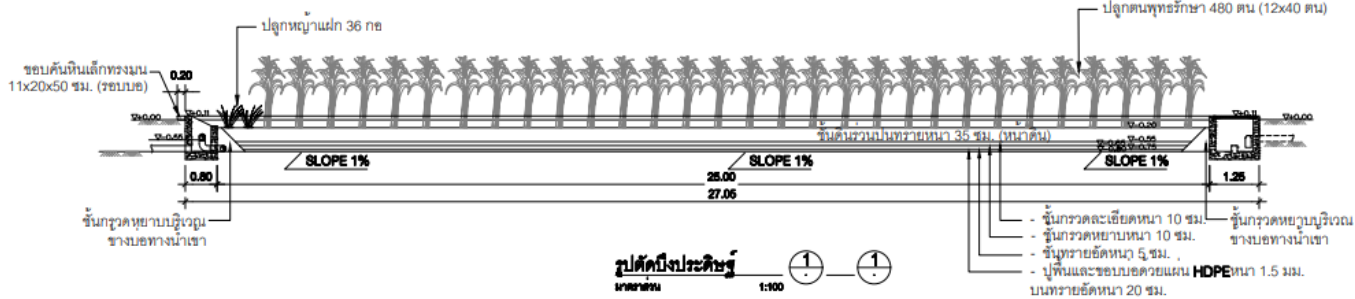
SNRU's Constructed Wetland (Cont.)



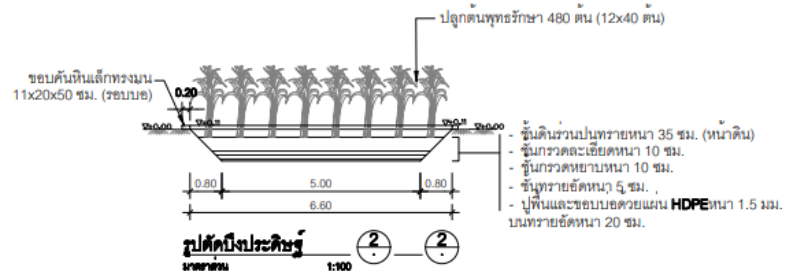
SNRU's Constructed Wetland (Cont.)



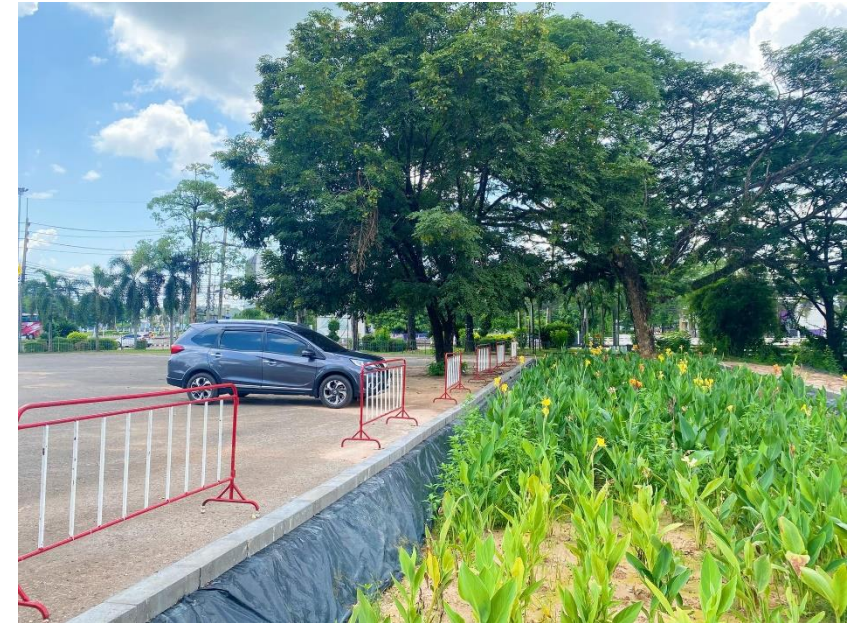
แปลนระบบน้ำบำบัดแบบเปียกประดิษฐ์
มาตราส่วน 1:100



รูปตัดเปียกประดิษฐ์
มาตราส่วน 1:100



รูปตัดเปียกประดิษฐ์
มาตราส่วน 1:100



SNRU's Tap Water Quality Monitoring & Review



Parameter	Standard value	Result
pH	6.5-8.5	Pass
Turbidity (NTU)	5	Pass
TDS (mg/L)	500	Pass
Chloride (mg/L)	250	Pass
Nitrate (mg/L)	50	Pass
TCB (MPN/10 mL)	<1.1	Pass
<i>E. Coli</i> (MPN/10 mL)	<1.1	Pass

(Monitoring by Faculty of Science and Technology)

SNRU's Wastewater Quality Monitoring & Review



Parameter	Standard value	Result
pH	5-9	Pass
BOD (mg/L)	20	Pass
TDS (mg/L)	500	Pass
SS (mg/L)	30	Pass
TKN (mg/L)	35	Pass
Oil and Grease (mg/L)	20	Pass
S ²⁻ (mg/L)	1	Pass

(Review by Pollution Control Department)

SNRU's Water Conservation Awareness



Building's water consumption

Building's carbon footprint

SNRU Sustainable Development Initiative

Climate Action



Carbon Capture and Storage in SNRU



- CCS of fruit trees
- Carbon Capture 212,283 kg CO₂ eq.
- Carbon Storage 57,895 kg CO₂ eq.



Carbon Footprint for Organization (CFO)



- 2024th year of
 - The first Baseline of SNRU's CFO
 - Establishment of SNRU Center for neutrality Carbon (SNRU-CNC)

